



High Desert Turning

Calendar Year Membership: \$25 individual, \$30 family Contact Hart Guenther

hdguenther@centurylink.net 275-3142

OFFICERS, DIRECTORS, & COMMITTEES FOR 2013

President:	Ron Bahm	881-8845	Newsletter:	Roger Umber	249-0444
Vice President:	Bill Mantelli	298-2603	Photographer:	Peter Frazier-Koontz	402-202-7233
Treasurer:	Hart Guenther	275-3142	Raffle:	Eric Hester	816-509-1333
Secretary:	Jim Griffin	891-4144	Librarian:	Pat Beatty	710-2497
State Fair:	Jim Breeden	352-0159	Equip/Workshops:	John Ellis	771-1773
Webmaster	Dave Stein	266-0356	Green Wood-ABQ:	Greg Hoefler	228-1606
Logistics:	Gale Greenwood	256-1379	Green Wood SF:	Eric Hester	816-509-1333
Lead Video:	Hy Tran	844-5417	Assistant Video:	Derek Roff	438-1820

Next Regular NMWT Meeting:

August 3, 2013
9:00 A.M. to Noon

Turning Platters - John Ellis

Platters are much more than big, flat and round! Many of the lessons learned in turning platters can be applied in making other turned work easier and more accurately. In this presentation John will cover the unique turning challenges associated with platters and similar works that are wide and relatively flat. He will cover topics ranging from selection and availability of stock, made-up platter blanks, alternative mounting and reversing methods, turning smooth relatively flat and even surfaces, tool techniques, and finishing alternatives that are based on the intended use of the finished platter.

John will show a variety of platters he's completed, including a square platter and a reversible double-sided one. During the demonstration part of his presentation, John will turn a 12" platter from a 3/4" thick

laminated blank made from a variety of contrasting woods. He will have a finished one made from the same original glue-up blank to show the "finished product" and also illustrate some common errors he's made while developing his techniques.

To demonstrate that a very large lathe isn't necessary to turn relatively wide projects, John will do the demonstration portion of his presentation on one of the NMWT's new Delta midi-lathes.

Future Programs/ Activities

Aug 3	Turning Platters/ John Ellis
Sept 7	Lathe Safety /TBD
Oct 5	J. Paul Fennell
Nov 2	TBD
Dec 7	Gift Exchange/ Program Selection
Jan 4, 2014	Finials & Thread Chasing/ Michael Mocho
Feb 1	TBD
March 1	Jimmy Clewes

President's Corner

We had a great time at Tampa at the AAW Symposium and wish more had attended. Next year, June 13-15, the Symposium will be at Phoenix - so plan for it. Speaking for myself, I was again like a "kid in a candy store"!

The NM State Fair is around the corner so I encourage all of us to get some turnings done and ENTER. I find myself pressing hard to get several turnings done but even if we entered the monthly Instant Gallery items we would have a great showing. There are different skill levels depending on your experience and years of turning so items will be compared accordingly.

We have a Chapter Picnic coming up on August 23, which will be a great time for all. Your Board has approved all the expenses will be covered including several good door prizes. Thanks in advance for all the volunteer help.

Keep the chips flying!

Ron

June 01 Program Summary

Airbrushing and Dying - Bob Stauch

In his thorough presentation, Bob didn't do any actual turning, covering instead the basic concepts of both dying and air-brush coloring of finished turnings. Bob has done this work for about 10 years, now mainly in his shop in Jemez Springs. Bob became aware of aniline dying from his wife's work with fibers and weaving. In general, dying can permit some or all wood grain to show and the materials available allow limitless "playing" with colors.

Types of aniline dyes: There are two general types of aniline dyes, alcohol based and water based. Each has advantages and disadvantages. Alcohol based dyes do not raise the grain on the finished turning and can be blended on the wood with a "spritz" of alcohol. Its principal drawback, however, is that it is not as light-fast as water based dying. For this reason, Bob uses water based dyes almost

exclusively. He prefers Procion MX dyes, which are available on the internet from Dharma Trading Company. The specific reference for the 126 colors available, sizes, cost, and other information can be found at www.dharmatrading.com/html/eng/3796-AA.shtml?Inav=dyes.html.

Procion MX by Jacquard is considered the best and can be found at: www.jacquardproducts.com/procion-mx.html. Procion MX dyes can also be obtained locally at Village Wools, 5916 Anaheim Ave., NE in Albuquerque, about a mile south of Woodworkers Supply off San Pedro.

Surface preparation: Bob sands his completed turnings to 400 grit, using moisture to raise the grain. He again sands with 400 grit and on to 600 grit. Beyond 600 grit, sanding tends to clog the grain and can resist the dye. (As with all wood sanding, start with the coarsest grain needed to remove tool marks or major flaws and progress step by step to 400 grain.) He does not use a sealer to inhibit penetration, but will at times bleach some woods to achieve a truer final color. Bob generally works off the lathe, but others may prefer to work with the piece still mounted.

Mixing the dyes: Bob demonstrated two major way to apply dyes, wipe-on and airbrushing. He made up small samples, as mixed dyes can begin to deteriorate in as soon as 72 hours. Although hot (not boiling) water can be used to accelerate the process, Procion MX will dissolve in room temperature water. He started with a small amount of water to dissolve the dye powder and form a paste, then added the additional water. He uses a small percentage of alcohol (up to 25%) in the water to increase penetration. To preserve mixed dyes (and prevent cross-contamination) he recommends pouring a minimal amount of the dyes to be used into small plastic cups, keeping the remainder of mixed dyes in covered containers.

Application – wipe-on: It is important to dampen the wood surface before applying dyes. Streaks of dye on dry wood cannot be eliminated. To dampen the wood, spray generously with water but wipe off any water on the surface. He also used pieces of clean cotton rag that also are dampened – one for each color, plus others for blending colors on the piece. Bob produced a classic "sunset" pattern on a flat piece of aspen, using only blue, red, and yellow dyes. He started with the darker colors first, moving to the lighter ones. After application of the pure colors, blending is the critical process. He used a dampened clean cloth to gradually work the "blend" and transition of colors between the primary ones.

(Bob noted that on end-grain wood, one may have to work carefully to control absorption.) He lets dyed pieces dry overnight, then coats them with several coats of Deft “rattle can” lacquer as a final finish (see finishing notes below).

Air brush equipment. Noting that he’s only been using the air brush application technique for about four months, his demonstration of this process represented only his learnings at this point. There are many types and sources of air brush equipment available. Bob recommends buying the best you can afford and uses an Iwata “Eclipse” air brush. One source is for this and other brands is:

www.tcpglobal.com/airbrushdepot/ieclipse.aspx.

There are various needle sizes and they can be used for both dyes and acrylic paints. Dyes or paints may need to be thinned to work properly. The airbrush compressor he used for the demonstration is from Harbor Freight, www.harborfreight.com/1-5-hp-58-psi-compressor-and-airbrush-kit-95630.html, and costs \$88.99 (on sale). It is a kit that includes an airbrush and hose, and has a built-in filter and pressure adjustment. It provides a sufficient volume of air at the recommended pressure of about 30 psi and is very quiet while operating. Another option is to use a standard shop compressor with a pressure regulator to reduce line pressure to 30 psi, and the compressed air must be passed through an oil/water filter.

Types of air brushes and basic use: Bob pointed out that there are two types of air brushes, single-action and double-action. Single action brushes have only on-off controls, while double action have on-off, plus variable volume controls, both operated with a single lever on the handle. (Air brushes also have several methods of holding the concentrated dye to be sprayed. Some have small closed containers that attach to the handle while others have open cups on top of the handle and hold only small amounts at a time. Bob used an open-cup design.) He recommended running plain water through the brush before using a dye to be sure it is clean and free of any prior dye contamination. When changing dye colors, discard any remaining dye in the cup and rinse with plain water. Run plain water through the brush with air to completely clean out dye in the tip. He recommends having a

waste jar and plenty of paper towels or rags to use when changing dyes or cleaning the brush. Application of air brush color: It’s important to have a dry test surface to try out and practice the spray technique prior to using it on a project. The surface of the wood to be sprayed is not dampened. While spraying, don’t use a continuous spray, moving back and forth, but use multiple separate light passes to build up the level of color desired. Bob uses blue painters tape to mask areas on the piece not intended to be dyed. The tape is removable painters tape available in any paint store in 1” or wider rolls, and is also available in ¼” and 1/8” rolls from some art supply sources. Other forms of masking such as liquid or dry-sheet “frisket” were briefly discussed. Sprayed surfaces can be further masked for applications of additional colors as soon as they are dry to the touch. The masking tape will not lift the sprayed color off if removed within a few hours.

As a sample, Bob sprayed a hollow form turned from Arizona cypress which had some unusual grain areas he wanted to feature. He sprayed the highlight color on the featured area first, followed by the main background color. Unlike wipe-on dyeing, blending cannot be achieved by wiping the surface between colors. Blending is done by the “mix” of colors sprayed onto specific areas, since the sprayed colors are quite transparent on the surface and will automatically mix in proportion to the amount applied of each color. Bob doesn’t usually spray the inside of his finished pieces. Fine results can be achieved, although using an air brush takes practice to develop finish-quality skills.

Finishing: Bob cautioned against doing much sanding of the colored piece since the colored surface quickly comes off. The piece should be allowed to dry completely before applying final finish coatings. Bob starts with six to eight coats of Deft “rattle can” lacquer, which can be applied with only brief drying times between coats. After curing he uses 2400 grit wet sanding to be sure the surface is defect free, has no runs, etc. He then applies five to six additional coats of lacquer. The final step is to sand using the Micro-Mesh system wet starting at about 2400 and working up in steps to 8000 or even 12,000 for the highest gloss possible.

Important note about sanding lacquer finishes: After a series of coats are applied the lacquer must “cure” at least overnight – or longer – before any sanding. This includes Bob’s initial 2400 wet sanding after the first set of coats, as well as the

New Mexico Wood Turners, Vol. 14, Issue 8
final coats sanded to a high gloss. While lacquer is completely dry to the touch in as little as 20 – 30 minutes, and can be recoated safely, it does not actually harden (“cure”) sufficiently to be sanded until at least 24 hours after the final coat in a series. If sanded prior to curing, it will clog virtually any grit of sandpaper and damage the built up coats.

July 06 Program Summary

The review of the July meeting will be delayed until the next issue.

It Doesn't Take a Geek: Web Help Wanted

NMWT's website is hungry for woodturning news and information. And FYI, web publishing is much more than the geeky, nerdy, techie stuff. I mean, any monkey can learn to program (no offense to programmers or monkeys), but a website lives by its content -- content that is current, useful, and interesting to its audience. That means you! You are the best reporters and contributors we could want -- no web knowledge needed!

So, send in your tips, quips, ideas, gripes, thoughts, and hard earned wisdom about woodturning, woods, tools, trivia, spouse relations, or whatever. Have a story? An anecdote? Cool photos? Woodturning gossip? Don't keep it to yourself. Share it with the woodturning community.

Send it polished or send it rough. Our extensive editorial staff will get it ready for prime time. You can look at our site for ideas, but also think "out of the bowl."

Email to: webmaster@nmwoodturners.org.

-Dave Stein

Silent Auction

Silent Auction will be held during each NMWT

August 03, 2013

workshop to raise money for a scholarship fund. The earnings from this fund will be used to reduce member's cost of attending hands-on sessions with professional turner-demonstrators at the discretion of the NMWT Board of Directors.

You may place any item that you think will sell in the auction. Bring only items relating to wood-working or woodturning. There will be auction sheets on a table outside the WWS meeting room. Take a sheet, write the name of the item on the sheet and put your item with the sheet. If you want the item to go for a certain amount, put your name and the minimum bid on the sheet. The Auction will be over at the end of the break. Money will be collected for items sold during the last part of the meeting. All money collected will go into the scholarship fund. Items not sold will be returned to the owner and the owner will remove the items from Woodworkers Supply

Schools

Santa Fe Community College www.sfccnm.edu

Santa Fe Community College offers both credit and noncredit courses taught by some of the most prominent artisans in the woodworking field. Classes are offered in the Fall, Spring, and Summer sessions. For more information on SFCC classes, contact club member Al Mirman, one of the Woodturning instructors, at 771-0490. Information can also be found at SFCC's web site.

Discounts & Rebates

Woodworker's Supply www.woodworker.com

Meeting Day Special: For the August 3rd meeting are Woodworkers Supply turning tools, located on pages 616 and 617 of the BIG catalog.

Crafts Supply www.woodturnerscatalog.com

Offers a discount to members on large orders. Craft Supply has implemented a new club support program. Visit their web site or phone Kathy Lawrence at 1-800-551-8876

Albuquerque Hardwood Lumber Co

NMWT members receive Wholesale Prices. ABQ Lumber has hardwoods, Lampine Thermofused Melamine, plywood, veneers, and furniture grade white pine.

Oneway Manufacturing

www.oneway.on.ca

Any member who may want to receive sales email direct from Oneway, please provide Alan Becker 505-467-8382 alan-becker@comcast.net with your name and email address.

Check their web site oneway.on.ca for products.

Albuquerque Exotic Woods

Jake Jacobson

Jake Jacobson has a store specializing in exotic woods. It's located at 2801 Eubank, NE #F, Albuquerque, 87112. They are in the Eastdale Shopping Center, sw. corner of Candelaria & Eubank, between H&R Block and Pudge Brothers Pizza. Look for the sign in the window.

Hours are Tuesday through Sunday, 8:30 – 6:00. (Monday by appointment)
Call (505) 293-WOOD (9663)

Crane Mountain Weapons

Contacts are: Pat, Marti, or Joe - 271-0797. This business uses exotic woods for gunstocks and sells off-cuts as turning blanks.

Lumber & Milling Services

Wes Thompson 505-384-2544
Doug Malmstrom 505-907-3015
Custom milling of your lumber or ours.

For Sale

Remember, your items for sale will run for one month unless you request an extension. There is no charge for listing items, and we welcome members to use this space for anything related to woodturning.

Wanted – Someone to build rustic cedar furniture. Cedar will be provided by Owner. Designs and price will be negotiated with the Owner. See Ron Bahm so connection can be made with client

→ **You can also run an ad to FIND or TRADE something?**

Instant Photo Gallery



Jose Sena - Oak Burl Pot



Jim Breeden - Russian Olive Mini Bowl



Jim Breeden - Red Ash Winged Bowl



Jim Breeden - Chestnut Pot



Rich McNutt - Mixed Species Fountain



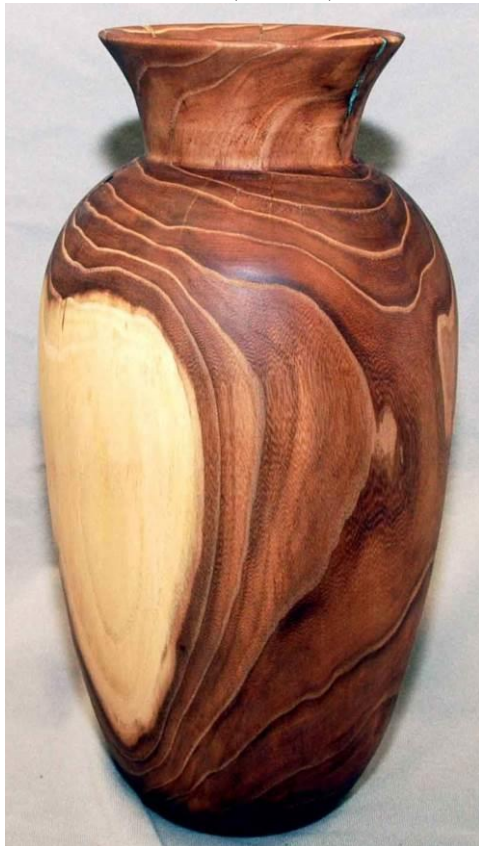
Don Thompson - Paduk & Africa Blackwood Sea Urchin Box



Larry Linford - Aspen Turquoise Inlay Hollowform



Larry Linford - Wire Burning Aspen Bowl



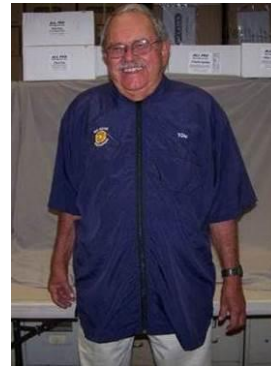
Nate Davey - Elm Urn

Mentors

Members are always welcome to contact the people on the following list for guidance to better turning ideas, and techniques -- Free to members so give a Mentor a call!

Name	Phone	Description
Bill Zerby	891-9188	Basic spindle turning & tool sharpening
Dan Shipman	296-9754	Basic turning, hollowing & segmented construction
Irling Smith	865-9230	Segmented turning & design
John Ellis	771-1773	Basic turning, plates, tools & handles
Alan Becker	467-8382	Intermediate Hollowing
Ron Phillips	867-0612	Specialty tools, rests & steadies
Ralph Watts	792-4860	Advanced turning, carving, coloring, and finishing
Ron Bahm	881-8845	Pen turning

Logo Wear Shirts/ Smocks



NMWT OFFERS CUSTOM TURNING SMOCKS

After much looking I have finally found a domestic source for a quality turning smock. A picture accompanies this article. The smock design and material are identical to that offered by AAW. The smocks come in five colors: Royal Blue, Navy Blue, Burgundy, Tan and Grey and in seven sizes: S, M, L, XL, XXL, XXXL, XXXXL. The smocks are sized to fit over a shirt so if you wear an L shirt you should order an L smock. AAW sells their smocks online for \$50 plus about \$9 shipping and handling plus \$3 extra for your name (added here). NMWT will charge \$50 per smock with NMWT logo plus \$3 for your name if desired. The price includes sales tax. The XXXXL size is \$3 extra and there is no price break for volume. A company in Colorado is manufacturing the smocks.

Normally, if you order and pay for an item at one meeting I can have it at the next; however, if you say please and buy me a cup of coffee, I can probably have it in two weeks.

Prices for NMWT's Shirts and Hats

- Long Sleeve Denim Shirt \$27.00
 - Short Sleeve Denim Shirt \$25.00
 - Polo (golf) shirt \$22.00
 - Short Sleeve T-Shirt \$15.00
 - Caps (baseball) \$11.00
- All items include embroidery
 Add \$2 for XXL and \$3 for XXXL
 Names Embroidered on Shirt \$3.00
 Logo on Customer Supplied Garment \$9.00

Contact: Tom Cour: 867-8771

New Policy: Loaning Lathes to NMWT Members

With the recent purchase of new Delta lathes and sale of older Jet and Delta lathes, the Board clarified the policy on loaning lathes to members. One Jet lathe was retained for loan to members, and more may be obtained as needed. The new Delta lathes will be used exclusively for demonstrations, classes, and workshops.

Summary of New Policy

1. Borrowers must be NMWT members in good standing.
2. The Equipment Coordinator (currently John Ellis) is in charge of access, maintenance, and scheduling.
3. Borrowers must pick up and return lathes to storage.
4. Loans will be for two months or less, but may be extended if not requested by another member.
5. Loans will be on a "first come" basis with waiting list, if necessary.
6. A list of all items loaned and Loan Conditions must be signed by borrowers at pick-up.
7. Borrowers are responsible for any damages or loss of borrowed items.
8. Borrowing members must seek instruction for using the lathes safely.
9. NMWT assumes no liability related to the use of the lathes.

A copy of the full policy may be obtained from the Equipment Coordinator.

New Policy: Loaning Lathes to Other AAW-Affiliated Chapters

New Policy: Loaning Lathes to Other AAW-Affiliated Chapters

The Board decided that the Delta lathes purchased in January may be loaned to other

AAW-affiliated chapters and adopted a policy to facilitate that process.

Summary of New Policy

1. Use of the loaned equipment is limited to chapter workshops, demonstrations, or classes, but may not be for personal use.
2. Equipment will not be loaned when needed by NMWT.
3. Loaned equipment must be transported to and from NMWT storage by the borrowing chapter.
4. A list of all items loaned and Loan Conditions must be signed by the borrower when picked up.
5. Damages beyond normal wear and tear are the responsibility of the borrowing club.
6. A "Usage Fee" to offset normal wear and tear of \$15 per calendar day per lathe will be charged to the borrowing chapter and must be paid at pick up.
7. The NMWT Equipment Coordinator is responsible for scheduling, arranging for pickup and return, and collection of Usage Fees.

A copy of the full policy may be obtained from the Equipment Coordinator.

Library Corner

A good selection of educational DVD's are available for check out during club meetings

Web Sites

NMWT

www.nmwoodturners.org

Please visit our web site. Webmaster Dave Stein continues to made many additions and improvements that are very useful to club members and the public. If you have not been there lately we now have a slide show on the Home Page and the Gallery is divided into sections with slide shows.

Suggested Web Sites

Found a good WEB site? Want to share it with other club members? Questions or suggestions are welcome. Please contact the club Webmaster Dave Stein at:

webmaster@nmwoodturners.org

www.cleanturn.net

www.pennstateind.com

www.tufftooth.com

www.woodmagazine.com,

www.penturners.org

www.woodturnerscatalog.com

www.WoodTurningz.com

www.woodturningvideosplus.com

www.woodweb.com

<http://www.sofasandsectionals.com/wood-turning-resources>

www.woodworkersjournal.com

For those of you who have equipment or material for sale, you can have it posted here in our newsletter, but another resource is:

www.albuquerque.craigslist.org

**New Mexico WoodTurners
c/o Roger Ueber
12520 Piru Blvd. SE
Albuquerque, NM 87123**

