



High Desert Turning

Calendar Year Membership: \$25 individual, \$30 family
 Contact Sheri Luikens at sheri.luikens@gmail.com 250-9410

OFFICERS, DIRECTORS, & COMMITTEES FOR 2014					
President:	Bill Mantelli	298-2603	Newsletter:	Roger Umber	249-0444
Vice President:	Nate Davey	910-964-8008	Photographer:	Peter Frazier-Koontz	402-202-7233
Treasurer:	Sheri Luikens	250-9410	Raffle:	Jim Breeden	352-0159
Secretary:	Larry Linford	870-1601	Librarian:	Pat Beatty	710-2497
State Fair:	Jim Breeden	352-0159	Equip/Workshops:	John Ellis	771-1773
Webmaster	Mike Gardner	298-3190	Green Wood-ABQ:	Greg Hoefler	228-1606
Logistics:	Gale Greenwood	256-1379	Green Wood SF:	Eric Hester	816-509-1333
Lead Video:	Hy Tran	844-5417	Assistant Video:	Derek Roff	438-1820

NEXT REGULAR NMWT MEETING

July 5, 2014
9:00 A.M. to Noon

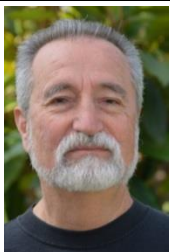
To Be Announced

Due to a last-minute cancellation of the planned program, the presentation for the meeting this coming Saturday will be announced via email later this week.

FUTURE PROGRAMS/ ACTIVITIES

July 5	TBA
August 2	ALL THINGS SPINDLE
Sept 6	TBA

PRESIDENTS CORNER



I, along with more than thirty NMWT members, attended the American Association of Woodturners 28th International Symposium in Phoenix, AZ about three weeks ago. I had a great

time there and I'll bet everyone else did too. Volunteering in the Instant Gallery, when turners were entering their turnings, gave me the opportunity to talk with some of them about their work. You know how reluctant we are to talk about our work.

Demonstration Room Assistants get a front row seat and that was a great place to be for John Beavers "Photographing Your Work" rotation. I have photograph my turnings, but I've never been able to eliminate the reflections, even on pieces with a satin finish. John showed a room full of wantabe photographers how to do that using just one light source and a couple of pieces of poster board. I have a few things I need to photograph.

There just wasn't enough time to see all of the "new" and "old" tools and talk to the people that know them best at the Tradeshow. Well, maybe next year. I'm starting to save my money now.

Bill

JUNE 7 PROGRAM SUMMARY

Ray Berry: Turning Pens and Bottle Stoppers
 Various types of mandrels are available. A removable shaft is good, as they tend to get bent, and then can be replaced without the expense of

replacing the whole mandrel. (They get bent when you press the tailstock too hard against the tail of the mandrel.) John Ellis pointed out that there are live centers with a hole to fit the mandrel which prevents the bending. Ray pointed out that if you use a pointed live center, the point can be damaged by tightening it too hard against the mandrel, and it will no longer go into wood. Use of a live center with 60 degree point will minimize this. Best mandrels allow cutting both pieces (top and bottom) of the blank at the same time.

Drill the hole in the blank for the pen tube by holding the blank in a chuck and using a drill chuck in the tailstock, then use the tailstock lever to drive the bit into the blank.

Use sandpaper to roughen the metal pen tube. Use the long tapered caps from the CA glue bottle to insert it into the blank. Coat the metal tube with CA glue and insert it halfway into the blank. Immediately remove it and push it all the way into the opposite end. Do this step very quickly, otherwise the glue can setup before the tube is completely inserted. This way glue gets spread along entire length of hole. Remove any excess glue and flatten ends of blanks with special drill bit or with disk or belt sander.

If hole is off-center, loosen mandrel and rotate blank 180 degrees on the mandrel. Re-tighten and perform finishing cuts. This will center the hole and prevent a "shoulder" when the top and bottom halves of the blank are put together.

Rounding:

Mount both top and bottom on mandrel, with bushings that will match the pen hardware in diameter. Start with spindle roughing gouge. Be sure it is SHARP. Handle slightly down, groove in gouge toward the cut, at about 45 degrees. Cut down to very nearly the diameter of the bushing. Then sand to the right diameter, using 180, 240 and 320 grit. (You may go to 400.) [NOTE: bushings can get sanded in this process, and repeated sandings can reduce their diameter. Check before each use and replace if necessary.] After rotary sanding, stop lathe and sand lightly end-to-end to eliminate scratches.

Finishing:

Polyurethane shear gloss, or CA glue or Dr. Kirk's Scratch Free. (The latter goes on raw wood like a sanding sealer. Wipe on with rag, buff with paper towel. Top with Dr. Kirk's Versa-Wax. Apply with rag, buff with paper towel or carefully with a rag.

CA Glue:

You can use plastic end caps that keep CA glue from building on bushings and/or gluing the blank to the bushings. Also, dab of wax or petroleum jelly on ends of the blanks will prevent this as well.

Start with boiled linseed oil. (Note: Some eliminate this step.) Use thick CA glue for first coat. Pour dribble drops on blank, wiping quickly back and forth with paper towel. Pull paper towel off quickly to avoid gluing it to the blank. If in a hurry, use accelerator to harden glue. Repeat as many times as necessary (including linseed oil), with lighter grades of CA glue. If you see ridges or "runs," sand LIGHTLY with 400+ grit. Then apply choice of polish.

Ron Bahm noted that the chemicals in CA glue are harsh, and that you can develop allergies. Be careful!

Ray noted that a negative rake scraper can work wonders smoothing the surface prior to finishing.

Acrylic Blanks:

Ray uses micromesh wet sanding, going through all nine grits. Dips mesh into paper cup of water. Ron Bahm suggested using a sponge to drip water on blank while sanding instead. Much less messy. Can take 15 minutes to sand. Or, he uses Dr. Kirk's Micro Magic red, white and blue creams. Buff after each coat. Not messy, much faster than the micromesh.

Bottle Stoppers:

Keep them short, so the wine bottle will fit in the fridge.

Like pen turning, there are multiple mandrels. Or you can make your own with a wooden disk (with a tenon and a shoulder) and a carriage bolt with 3/8 x 16 thread.

Dowels will be used to attach work to the stopper portion. Using same method described for pens, drill hole at least one bit size smaller than the diameter of the dowel. For soft wood, drill two bit sizes smaller. Don't drill all the way through the end of the stopper. Screw the stopper onto the end of the bolt.

For cutting you can use the tailstock – or not. Use spindle roughing gouge to round blank. Be creative in shaping the top portion of the stopper. Try to avoid making more than one of shape. You can decorate the end (top) of the stopper with inserts (from woodcraft, Tandy, Hobby Lobby, Rio Grande Jewelry Supply, etc. Or use the ELF texturing tool. (Easier than the Sorby chatter tool.)
Finish using the same methods described for pens above. Glue to the sealer portion that goes inside the bottle neck.

SILENT AUCTION

Silent Auction will be held during each NMWT workshop to raise money for a scholarship fund. The earnings from this fund will be used to reduce member's cost of attending hands-on sessions with professional turner-demonstrators at the discretion of the NMWT Board of Directors.

You may place any item that you think will sell in the auction. Bring only items relating to wood-working or woodturning. There will be auction sheets on a table outside the WWS meeting room. Take a sheet, write the name of the item on the sheet and put your item with the sheet. If you want the item to go for a certain amount, put your name and the minimum bid on the sheet. The Auction will be over at the end of the break. Money will be collected for items sold during the last part of the meeting. All money collected will go into the scholarship fund. Items not sold will be returned to the owner and the owner will remove the items from Woodworkers Supply.

SCHOOLS

Santa Fe Community College www.sfccnm.edu

Santa Fe Community College offers both credit and noncredit courses taught by some of the most prominent artisans in the woodworking field. Classes are offered in the Fall, Spring, and Summer sessions. For more information on SFCC classes, contact club member Al Mirman, one of the Woodturning instructors, at 771-0490. Information can also be found at SFCC's web site.

DISCOUNTS & REBATES

WOODWORKER'S SUPPLY

www.woodworker.com

Meeting Day Specials for the July 5th meeting: To be announced.

CRAFTS SUPPLY

www.woodturnerscatalog.com

Offers a discount to members on large orders. Craft Supply has implemented a new club support program. Visit their web site or phone Kathy Lawrence at 1-800-551-8876

ALBUQUERQUE HARDWOOD LUMBER CO

NMWT members receive Wholesale Prices. ABQ Lumber has hardwoods, Lampine Thermofused Melamine, plywood, veneers, and furniture grade white pine.

STOCK BUILDERS SUPPLY

www.stockbuildingsupply.com

5815 Edith Blvd NE

Albuquerque, NM 87107

(505) 345-2865

Wholesale Prices to NMWT Members

ALBUQUERQUE EXOTIC WOODS

www.abqexoticwoods.com

Jake Jacobson has a store specializing in exotic woods, located at 4224 Menaul Blvd NE.

Hours: Tuesday through Sunday, 8:30 – 6:00.

(Monday by appointment)

Contact: (505) 293-WOOD (9663)

CRANE MOUNTAIN WEAPONS

Contacts: Pat, Marti, or Joe - 271-0797. This business uses exotic woods for gunstocks and sells off-cuts as turning blanks.

LUMBER & MILLING SERVICES

Wes Thompson 505-384-2544

Doug Malmstrom 505-907-3015

Custom milling of your lumber or ours.

FOR SALE

Remember, your items for sale will run for one month unless you request an extension. There is no charge for listing items, and we welcome members to use this space for anything related to woodturning.

You can also run an ad to FIND or TRADE something

INSTANT PHOTO GALLERY

The photographer will only be available until 8:45 A.M. on the day of the meeting to take photos of the instant gallery items.



Hy Tran – Small Elm Bowl



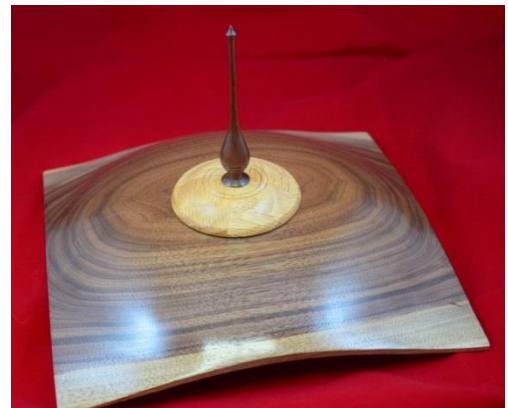
Jim Breeden – Bowl of Unknown Wood



Larry Linford – Walnut/Cherry Bowl



Jim Breeden – Black Locust Bowl



Ron Bahm – Square Walnut/Oak Box



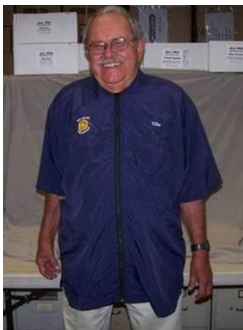
Pat Beatty – Two Pine Bangles

MENTORS

Members are always welcome to contact the people on the following list for guidance to better turning ideas, and techniques -- Free to members so give a Mentor a call!

Name	Phone	Description
Bill Zerby	891-9188	Basic spindle turning & tool sharpening
Dan Shipman	296-9754	Basic turning, hollowing & segmented construction
Irling Smith	865-9230	Segmented turning & design
John Ellis	771-1773	Basic turning, plates, tools & handles
Alan Becker	467-8382	Intermediate Hollowing
Ron Phillips	867-0612	Specialty tools, rests & steadies
Ralph Watts	792-4860	Advanced turning, carving, coloring, and finishing
Ron Bahm	881-8845	Pen turning

LOGO WEAR SHIRTS/ SMOCKS



NMWT OFFERS CUSTOM TURNING SMOCKS

After much looking I have finally found a domestic source for a quality turning smock. A picture accompanies this article. The smock design and material are identical to that offered by AAW. The smocks come in five colors: Royal Blue, Navy Blue, Burgundy,

Tan and Grey and in seven sizes: S, M, L, XL, XXL, XXXL, XXXXL. The smocks are sized to fit over a shirt so if you wear an L shirt you should order an L smock. AAW sells their smocks online for \$50 plus about \$9 shipping and handling plus \$3 extra for your name (added

here). NMWT will charge \$50 per smock with NMWT logo plus \$3 for your name if desired. The price includes sales tax. The XXXXL size is \$3 extra and there is no price break for volume. A company in Colorado is manufacturing the smocks. *Normally, if you order and pay for an item at one meeting I can have it at the next; however, if you say please and buy me a cup of coffee, I can probably have it in two weeks.*

Prices for NMWT's Shirts and Hats

- Long Sleeve Denim Shirt \$27.00
- Short Sleeve Denim Shirt \$25.00
- Polo (golf) shirt \$22.00
- Short Sleeve T-Shirt \$15.00
- Caps (baseball) \$11.00
 - All items include embroidery
 - Add \$2 for XXL and \$3 for XXXL
 - Names Embroidered on Shirt \$3.00
 - Logo on Customer Supplied Garment \$9.00

Contact: Tom Cour: 867-8771

LIBRARY CORNER

A good selection of educational DVD's are available for check out during club meetings

NMWT WEB SITE

www.nmwoodturners.org

Please visit our web site. Webmaster Mike Gardner continues to made many additions and improvements that are very useful to club members and the public. If you have not been there lately we now have a slide show on the Home Page and the Gallery is divided into sections with slide shows.

NEWSLETTER ENTRIES

If you have tips, news, "For Sale" or newsletter entry (try to stay 250 words or less, no embedded photos ; send photos as separate attachments), Please send it to news@nmwoodturners.org for publication in a future newsletter. **Must be received by the last Saturday of the month to make the most current newsletter.**

SUGGESTED OTHER WEB SITES

Found a good WEB site? Want to share it with other club members? Questions or suggestions are welcome. Please contact the club Webmaster Mike Gardner at: webmaster@nmwoodturners.org

www.cleanturn.net

www.pennstateind.com

www.tufftooth.com

www.woodmagazine.com, www.penturners.org

www.woodturnerscatalog.com

www.WoodTurningz.com

www.woodturningvideosplus.com

www.woodweb.com

<http://www.sofasandsectionals.com/wood-turning-resources>

www.woodworkersjournal.com

Another resource is:

www.albuquerque.craigslist.org

**New Mexico WoodTurners
c/o Roger UMBER
12520 Piru Blvd. SE
Albuquerque, NM 87123**

