

# High Desert Turning

Calendar Year Membership: \$25 individual, \$30 family  
 Contact Rick Judd at [rickjudd@mac.com](mailto:rickjudd@mac.com) or 612-280-8300



OFFICERS, DIRECTORS, & COMMITTEES FOR 2016					
<b>President:</b>	Larry Linford	505-870-1601	<b>Newsletter:</b>	Roger Umber	249-0444
<b>Vice President:</b>	Hy Tran	844-5417	<b>Photographer:</b>	Peter Frazier-Koontz	402-202-7233
<b>Treasurer:</b>	Rick Judd	612-280-8300	<b>Raffle:</b>	Jim Breeden	352-0159
<b>Secretary:</b>	Kathy Knorr	847-819-2515	<b>Librarian:</b>	Ron Bahm	881-8845
<b>State Fair:</b>	Jim Breeden	352-0159	<b>Equip/Workshops:</b>	Scott Eckstein	505-270-0516
<b>Webmaster</b>	Mike Gardner	298-3190	<b>Green Wood-ABQ:</b>	Greg Hoefler	228-1606
<b>Logistics:</b>	Gale Greenwood	256-1379	<b>Green Wood SF:</b>	Eric Hester	816-509-1333
<b>Lead Video:</b>	Derek Roff	438-1820	<b>Assistant Video:</b>		

## NEXT REGULAR NMWT MEETING

**March 5, 2016**  
**9:00 A.M. to Noon**

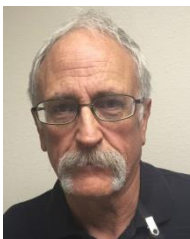
### Hollowing System– Taz Bramlette

Taz Bramlette will demonstrate the fine art of hollowing and the results that can be achieved by using a hollowing system.

## FUTURE PROGRAMS/ ACTIVITIES

Mar 5th	<b>HOLLOWING SYSTEMS</b>
	<b>TBA</b>

## PRESIDENTS CORNER



It's March, and as we slide into spring, the NMWT Board of

Directors has a request of club members.

As I'm sure you know, we video-record our all monthly club presentations in order to ensure that current and future members get the most out of them. (We make these videos available through our video library – which is being updated as we speak by past-President Ron Bahm). But editing and preparing a video for distribution after a meeting takes time. Sometimes they are not available for months after the original presentation.

In order to make at least some of the information available in a more timely fashion, your Board members have been taking turns trying to take detailed notes on each presentation that can then be published in the next month's Newsletter.

Our success has been moderate so far, because the Board members are already busy with other duties. We simply need more note takers. If you regularly (or even sometimes) take thorough notes on the presentations, we would ask you to occasionally share them with the club by submitting them to Newsletter Editor Roger Umber. But, in order to make sure a meeting is

New Mexico Wood Turners, Vol. 17, Issue 3 covered, we need to know up front that someone is taking notes they will share.

So, at the beginning of each meeting we will be asking for a volunteer to share notes with the club. This involves very little responsibility, and the only time requirement outside the meeting is that we might ask you to type your notes before submitting them. You would have three weeks to do this. And if you miss a point or two (who doesn't?), you can fill in any blanks by calling any of the Board members.

By changing volunteers for each meeting, no one will be over-burdened, and you will have a chance to get more deeply involved with your club (and help fellow turners).

Don't be shy! Help out!

Larry Linford, President

---

## JANUARY PROGRAM

---

### **Abrasives for Wood – Ron Phillips, Bill Zerby, John Ellis**

During our last meeting, John Ellis, Bill Zerby and Ron Phillips each gave a presentation on the fine aspects of abrasives.

John Ellis' presentation was an article he is fermenting for AAW titled "Comparing Types of Abrasive Products on the Market". In his presentation, John explained the terminology of sandpaper vs abrasive paper and the forms of sanding media (sheet, disc, roll, glove, mesh and pad). Abrasive types are silicon carbide (wet/dry), aluminum oxide, garnet, and diamond (expensive!). Stearated type of abrasives contain a metallic soap to lubricate while sanding to prevent clogging and to extend the life of the sandpaper. Lastly, there is zirconium oxide (blue in color), an industrial-duty abrasive which will "eat" your turnings and turn them to dust if not judiciously controlled! Application method while lathe is running is either hand or powered. John offered the tip that turning off the lathe and hand sanding with the grain will eliminate cross-grain scratches.

March 5, 2016

Bill Zerby demonstrated the art of spindle turning and the sanding thereof. Bill's First Rule of Thumb: use a safety drive spur center on small items of 4" diameter or less and standard drive for larger items. His first spindle shape was a plain ol' cylinder. To sand said object, fold your sandpaper into thirds. With this method, the sandpaper will last longer and not be prone to slippage. With the lathe running at slow speed, sand down the length of the cylinder, then stopping the lathe and sanding with the grain to eliminate cross-grain scratches. Bill cut some beads and coves – using a skew! When using any turning tool and riding the bevel, the tool can leave a burnished area which will make it difficult for finish to be absorbed. Use light sanding with minimum size grit sandpaper to remove burnished area. To sand in the coves, wrap sandpaper around a round object (such as a dowel) to fit into the cove. To sand beads, bend sandpaper into a curve and use a pulling action at an angle to lessen cross-grain scratches. Sandpaper must be moving to eliminate scratches. As always – do not skip any grits as you proceed to the finished product.

Ron Phillips' demonstration was downsized to run in the time remaining. The use of abrasives can/will depend on your object and finished used on the final product, i.e. show pieces will probably be sanded down to 600-1000 grit and daily-use objects – such as those for food preparation – need only be sanded down to 220 or 320 grit. Ron passed out some dense foam cut to usable sizes and explained how to use the foam to make powered sanding discs using spray adhesive or hook-and-loop backing to attach sandpaper. When power-sanding, use low speed on the lathe (300-500 rpm). Using higher speeds will cause turnings to become hot and cause the object to fail due to cracking. High lathe speed while sanding segmented or laminated turnings can cause glue joints to fail – triggering a great explosion of pieces and vast amounts of blue air! While sanding, if dust-catching equipment is not available, use a fan stationed behind you to move dust out and away. This is not to preclude any kind of respiratory protection.

New Mexico Wood Turners, Vol. 17, Issue 3  
Remember – safety first! Dust collection, face shield, safety glasses, and respiratory protection at all times!

March 5, 2016

turner-demonstrators at the discretion of the NMWT Board of Directors.

You may place any item that you think will sell in the auction. Bring only items relating to wood-working or woodturning. There will be auction sheets on a table outside the WWS meeting room. Take a sheet, write the name of the item on the sheet and put your item with the sheet. If you want the item to go for a certain amount, put your name and the minimum bid on the sheet. The Auction will be over at the end of the break. Money will be collected for items sold during the last part of the meeting. All money collected will go into the scholarship fund. Items not sold will be returned to the owner and the owner will remove the items from Woodworkers Supply.

---

## WOMEN IN TURNING

---



Women in Turning (WIT) is a new committee of the AAW, bringing together women worldwide who share a passion for woodturning.

We are dedicated to encouraging and assisting women in their pursuit of turning, to sharing ideas and processes to further skills and creativity, and to increasing participation of women in the field of woodturning.

Facebook: <https://www.facebook.com/Women-in-Turning-732036653523097/>

Contact WIT Regional Ambassador Kathy Knorr [kathynorr@gmail.com](mailto:kathynorr@gmail.com), 505-983-8284 or AAW's [Linda@woodturner.org](mailto:Linda@woodturner.org)

-----  
Women in Turning will be hosting an Albuquerque Meet - Greet - Turn and Learn weekend in both Albuquerque and Santa Fe. The planned date is April 1-2-3, 2016, yet subject to change! Stay tuned for further details. Please contact our Regional AAW-WIT representative Kathy Knorr at [KathyKnorrSF@gmail.com](mailto:KathyKnorrSF@gmail.com).  
-----

Registration has just opened for the 30th Annual AAW International Symposium in Atlanta this summer, and The Women In Turning (WIT) Hands-On Room will most certainly be a highlight. Remember, lathe stations are limited and preregistration is **REQUIRED** and **First Come, First Served**. Go to <http://www.woodturner.org/?page=2016WITHandsOn> for all the details and directions.

---

## SILENT AUCTION

---

Silent Auction will be held during each NMWT workshop to raise money for a scholarship fund. The earnings from this fund will be used to reduce member's cost of attending hands-on sessions with professional

---

## SCHOOLS

---

### **Santa Fe Community College** [www.sfccnm.edu](http://www.sfccnm.edu)

Santa Fe Community College offers both credit and noncredit courses taught by some of the most prominent artisans in the woodworking field. Classes are offered in the Fall, Spring, and Summer sessions. For more information on SFCC classes, contact club member Al Mirman, one of the Woodturning instructors, at 771-0490. Information can also be found at SFCC's web site.

---

## DISCOUNTS & REBATES

---

### **WOODWORKER'S SUPPLY**

[www.woodworker.com](http://www.woodworker.com)

Meeting Day Specials for the February 6th meeting will be turning tools. Woodworker's Supply has increased their stock of Crown turning tools.

### **CRAFTS SUPPLY**

[www.woodturnerscatalog.com](http://www.woodturnerscatalog.com)

Offers a discount to members on large orders. Craft Supply has implemented a new club support program. Visit their web site or phone Kathy Lawrence at 1-800-551-8876

### **NORTH WOODS, LLC**

[www.nwfiguredwoods.com](http://www.nwfiguredwoods.com)

PO Box 808 Forest Grove OR 97116  
[800-556-3106](tel:800-556-3106), [503-357-9953](tel:503-357-9953)

New Mexico Wood Turners, Vol. 17, Issue 3  
One of the AAW Chapter Presidents (and our customer) mentioned to us that he subscribes to several AAW newsletters and didn't see the North Woods coupon in them. So, letting you know that all of your AAW members and all other Club members have access to a lifetime use 15% discount on any website wood purchase. Use coupon code "WOODTURNERS" at checkout.



### ALBUQUERQUE EXOTIC WOODS

[www.abqexoticwoods.com](http://www.abqexoticwoods.com)

Jake Jacobson has a store specializing in exotic woods, located at 4224 Menaul Blvd NE.

Hours: Tuesday through Sunday, 8:30 – 6:00.  
(Monday by appointment)  
Contact: (505) 293-WOOD (9663)

### PACKARD WOODWORKS: THE WOODTURNER'S SOURCE

[www.packardwoodworks.com/](http://www.packardwoodworks.com/)

Specializes in woodturning tools and supplies with a catalog available.

215 S Trade St, Tryon, NC 28782  
1-800-683-8876

### ALBUQUERQUE HARDWOOD LUMBER CO

NMWT members receive Wholesale Prices. ABQ Lumber has hardwoods, Thermofused Melamine, plywood, veneers, and furniture grade white pine.

### STOCK BUILDERS SUPPLY

[www.stockbuildingsupply.com](http://www.stockbuildingsupply.com)

5815 Edith Blvd NE  
Albuquerque, NM 87107  
(505) 345-2865

Wholesale Prices to NMWT Members

March 5, 2016

### CRANE MOUNTAIN WEAPONS

Contacts: Pat, Marti, or Joe - 271-0797. This business uses exotic woods for gunstocks and sells off-cuts as turning blanks.

### LUMBER & MILLING SERVICES

Wes Thompson 505-384-2544  
Doug Malmstrom 505-907-3015  
Custom milling of your lumber or ours.

### FOR SALE

Remember, your items for sale will run for one month unless you request an extension. There is no charge for listing items, and we welcome members to use this space for anything related to woodturning.

**You can also run an ad to FIND or TRADE something.**

### INSTANT PHOTO GALLERY

The photographer will only be available until 8:45 A.M. on the day of the meeting to take photos of the instant gallery items.



Taz Bramlette – Black Oak Burl Bowl





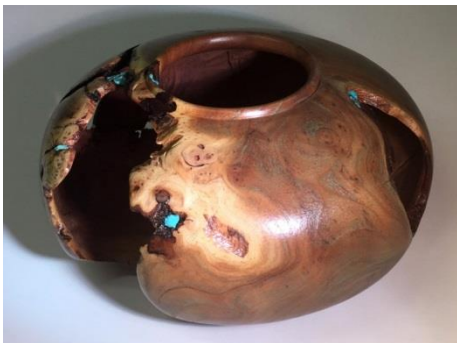
Jim Breedon – Russian Olive Bowl



Kevin Van Wicklin – Myrtlewood Carved Platter



Ralph Watts Walnut Pierced Vase



Jim Breedon – Russian Olive Root Burl Bowl



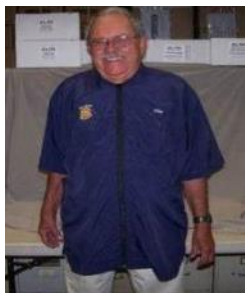
Michael Alguire – Mesquite “My Creative Side” Vessel

**MENTORS**

Members are always welcome to contact the people on the following list for guidance to better turning ideas, and techniques -- Free to members so give a Mentor a call!

Name	Phone	Description
Bill Zerby	263-6632	Basic spindle turning & tool sharpening
Dan Shipman	296-9754	Basic turning, hollowing & segmented construction
Irling Smith	865-9230	Segmented turning & design
John Ellis	771-1773	Basic turning, plates, tools & handles
Alan Becker	467-8382	Intermediate Hollowing
Ron Phillips	867-0612	Specialty tools, rests & steadies
Ralph Watts	500-5859	Advanced turning, carving, coloring, and finishing
Ron Bahm	881-8845	Pen turning

## LOGO WEAR SHIRTS/ SMOCKS



### NMWT OFFERS CUSTOM TURNING SMOCKS

After much looking I have finally found a domestic source for a quality turning smock. A picture accompanies this article. The smock design and material are identical to that offered by AAW. The smocks come in five colors: Royal Blue, Navy Blue, Burgundy, Tan and Grey and in seven

sizes: S, M, L, XL, XXL, XXXL, XXXXL. The smocks are sized to fit over a shirt so if you wear an L shirt you should order an L smock. AAW sells their smocks online for \$50 plus about \$9 shipping and handling plus \$3 extra for your name (added here). NMWT will charge \$50 per smock with NMWT logo plus \$3 for your name if desired. The price includes sales tax. The XXXXL size is \$3 extra and there is no price break for volume. A company in Colorado is manufacturing the smocks.

*Normally, if you order and pay for an item at one meeting I can have it at the next; however, if you say please and buy me a cup of coffee, I can probably have it in two weeks.*

### Prices for NMWT's Shirts and Hats

Long Sleeve Denim Shirt	\$27.00
Short Sleeve Denim Shirt	\$25.00
Polo (golf) shirt	\$22.00
Short Sleeve T-Shirt	\$15.00
Caps (baseball)	\$11.00

- All items include embroidery
- Add \$2 for XXL and \$3 for XXXL
- Names Embroidered on Shirt \$3.00
- Logo on Customer Supplied Garment \$9.00
- Contact: Tom Cour: 867-8771

## LIBRARY CORNER

A good selection of educational DVD's are available for check out during club meetings

## NMWT WEB SITE

[www.nmwoodturners.org](http://www.nmwoodturners.org)

Please visit our web site. Webmaster Mike Gardner continues to made many additions and improvements that are very useful to club members and the public. If you have not been there lately we now have a slide show on the Home Page and the Gallery is divided into sections with slide shows.

## NEWSLETTER ENTRIES

If you have tips, news, "For Sale" or newsletter entry (try to stay 250 words or less, no embedded photos ; send photos as separate attachments), Please send it to [news@nmwoodturners.org](mailto:news@nmwoodturners.org) for publication in a future newsletter. **Must be received by the last Saturday of the month to make the most current newsletter.**

## SUGGESTED OTHER WEB SITES

Found a good WEB site? Want to share it with other club members? Questions or suggestions are welcome. Please contact the club Webmaster Mike Gardner at: [webmaster@nmwoodturners.org](mailto:webmaster@nmwoodturners.org)

[www.cleanturn.net](http://www.cleanturn.net), [www.pennstateind.com](http://www.pennstateind.com),  
[www.tufftooth.com](http://www.tufftooth.com), [www.woodmagazine.com](http://www.woodmagazine.com)  
[www.penturners.org](http://www.penturners.org), [www.woodturnerscatalog.com](http://www.woodturnerscatalog.com)  
[www.WoodTurningz.com](http://www.WoodTurningz.com), [www.woodweb.com](http://www.woodweb.com)  
[www.woodturningvideosplus.com](http://www.woodturningvideosplus.com)  
[www.sofasandsectionals.com/wood-turning-resources](http://www.sofasandsectionals.com/wood-turning-resources)  
[www.woodworkersjournal.com](http://www.woodworkersjournal.com)

Another resource is:

[www.albuquerque.craigslist.org](http://www.albuquerque.craigslist.org)

**New Mexico WoodTurners  
c/o Roger Umber  
12520 Piru Blvd. SE  
Albuquerque, NM 87123**

