



High Desert Turning

Calendar Year Membership: \$20 individual, \$25 family Contact Hart Guenther

hdguenther@earthlink.net or 275-3142

OFFICERS, DIRECTORS, & COMMITTEES FOR 2010

President:	Tom Cour	867-8771	Logistics:	Gale Greenwood	256-1379
Vice President:	Ron Bahm	881-8845	Newsletter:	Bobby Dickson	681-7685
Treasurer:	Hart Guenther	275-3142	Photographer:	Bill Kalb	771-1376
Secretary:	Rich McCartney	792-9440	Raffle:	Harley Meuret	891-2170
State Fair:	Bill Mantelli	298-2603	Librarian:	Pat Beatty	710-2497
Webmaster	Dave Stein	266-0356	Equip/Workshops	John Ellis	771-1773

Next Regular NMWT Meeting:

October 01, 2011
9:00 AM to Noon

Program for October 1

Ron Phillips has organized a new and creative approach for this program. He will have three lathes available for use during the meeting, and will have Bill Zerby and Al Merman assist him as "instructors." One of the three instructors will demonstrate a technique to the whole group, then (primarily) novices and beginners will be asked to go to one of the lathes for some "hands-on" experience while an instructor observes and coaches. Several people will be able to try the technique at each lathe. In all, several basic techniques (coves, beads, skew work, etc.) will be covered. Much of time, the rest of the "audience" will observe and may ask questions or comment during the demonstrations.

Wood and tools and all supplies needed will be provided, although people may bring their own tools to use if desired.

This meeting will focus on spindle turning techniques, and if successful, future sessions will be held on other basic turning processes. While primarily for newer turners, this session will be useful to all members who wish to "refresh" their knowledge of the skills presented.

Balloon Fiesta Traffic Detour

Remember Saturday is the opening of the balloon Fiesta. It is suggested that members travel North on San Pedro, from Paseo Del Norte. Alameda will be closed.

Future Meetings

Month	Topic
Oct 01	Basic Spindle Turning Techniques by Ron Phillips
Nov 05	- Election of Officers For 2012 - AAW Symposium Recap by Tom C., John E., and Rich Mc. - 1 Hr. Doug Crawforth - Coin Size Miniatures
Dec 03	- Christmas Gift Exchange - Planning of Presentations For 2012 .

If you would like to participate in any of the above or have ideas for a program or topics, please contact Ron Bahm at 881-8845.

Sept 03 Program Summary!

Multi-Axis Vases and Techniques

by

Craig Timmerman

Craig is a professional turner from Austin, Texas. He is a native of Iowa and moved to Austin after college where worked for Texas Instruments as a software developer. He took a woodturning course at the Woodcraft Store in Austin, was hooked and the rest is history. I first saw Craig at a rotation at the AAU Symposium in St. Paul, Minnesota this past summer. I was impressed by the professionalism and level of preparation of his presentation. John Ellis was in contact with him and arranged for his visit and demo presentation to our September meeting. He also continued the presentation after lunch and taught a hands on session to six members at John's shop on Sunday.

WINGED BOWLS

Craig's first demonstration was the turning of a winged bowl. He started with a blank, the thickness depends on the thickness desired of the wings. He then cut the slab in the form of a rhombus. (A rhombus has equal sides but the corners are NOT square.) I guess you could say a rhombus is a square squashed to one side. He mounted the blank, flat sides between centers, and turned tenons on both sides. He chucked the blank onto the top tenon then began forming the wings. He wasted away material from the under side of the wings to the form he wanted and to the rough thickness desired at the top of the wing (the portion of the wing next to the bowl). Cuts should be made from the outside in and care should be taken because you are turning "air" much of the time. Keep tail stock engaged until the blank is running balanced. Move tailstock out of

the way so that the underside of the wings can be finished. Form the under side of the wings as you would form a cove. You never form a wing with a curve tighter than your smallest sanding tool. Now blend the wings into a form that blends into the outside of the bowl.

Now sand the outside of the bowl. Sand trouble spots with the lathe off. He recommends hand sanding the wings WITH THE LATHE OFF.

He reversed the piece and chucked on the bottom tenon and brought up the tailstock for support. He maintains a bowl thickness of 1/4" to 3/8" for stability. He first finished the top of the wings, maintaining a uniform or perhaps a slightly diminishing thickness inside to outside. When the wings were done he hollowed the bowl. The thickness of the bowl should be the thickness of the wings. Now sand using the technique used for the outside of the bowl and wings. If sanding with the lathe on, BEWARE OF THE WINGS!!

This brings us to the task of turning off the bottom tenon which can be done in three different ways:

- jam chuck
- vacuum chuck
- reverse onto waste block with tailstock support

Jam chucks usually don't work well on these bowls because the bowl sides slope too much to fit snugly on a jam chuck so Craig uses both vacuum chuck and reverse chucking. Reverse chucking using a waste block is both simple and cheap:

- Turn a disc shape roughly the size of the bottom of the bowl.
- Give it a curved edge and a concave center.
- Mount the bowl on this disc with a piece of flexible leather between the disc and the bowl. Leather protects the bowl and provides more friction.
- Use tailstock for support.

Do any last refinements to the shape of the bowl. Form foot of the bowl. Do any finish sanding not already done. Turn tenon down to about 1/2" diameter. Cut off tenon with a backsaw. Use rotary tool to cut off any remaining tenon then sand bottom of foot.

MULTI-AXIS VASE

After the wing bowl Craig demonstrated turning a multi-axis vase which featured a long necked vase with the neck tilted to one side. He began with a four sided blank about 9" long by ~ 4-5" square mounted between centers long ways and turned it to a cylinder with a tenon on each end. He then marked the centerline on one side and marked another centerline at right angles to the first. He then marked a point 1" to the left of the centerline on the bottom and 1" to the right of the center line on the top.. He connected these two points with a line. these two lines represent the two axes to be turned. Now he mounted the cylinder with the three lines or axes marked on it in the lathe. He roughed out the bottom of the vase leaving at least 1" of stock at the bottom (in my experience 1-1/2" would have been better). Mark indexing lines at the bottom then part off the bottom. Leave ~1/8" on the bottom of the bulb part of the base for easier grain matching and glue area.

Line up the vase along the center line then sketch in the shape of the neck along the slanted line that you drew. Use the centerline in conjunction with the sketched neck to determine how deep to drill the pilot hole. Drill a pilot hole with a 3/4" Forstner bit to within 1/2-3/4" of where the neck is marked then drill a bit further with a 1/2" twist bit. Hollow the vessel; try to hollow some up into the neck. If too much wood is left at the top, the base will be top heavy. Prior to removing the base from the chuck make sure the walls of hollowing hole are parallel. Also make sure the bottom is flat as this is now a glue surface

Chuck the bottom waste piece (with the tenon attached). Form a plug that fits the hollowing hole exactly and make sure the rest of the waste piece is perfectly flat as this is the matching glue surface. Re-chuck the vase. Now the waste piece with plug is glued to the bottom of the vase with CA glue; use tailstock as a clamp.

Remove the vase from the chuck and using a Dremel tool remove material from the tenons at each end so that the piece can be chucked between centers along the other (slanted) axis. If using a large lathe the top can be turned until it is solid. If a mini lathe is being used the excess wood may have to be wasted away using a rotary tool of some kind. Now form the neck being aware that too much wood will be left on one side to avoid eating into the bulb. When neck is roughly formed. remove the point from the live center and drill as large a hole as the tail stock will allow into the hollowed space of the bulb. Remove the piece from the lathe and enlarge the hole with a larger bit in a hand held drill.

Now the task of blending the neck into the bottom is a manual operation with a rotary tool. Craig recommends an Arbotech Grinder or Mini-Arbotech grinder with a standard wood carver blade. When the rough blending is done switch to a rotary tool such as right angle die grinder or a Foredom style tool or a Dremel. The Dremel will be slow. Avoid "flats" and gouges when working with the rotary tools. Sand: use 60-80 grit Power-loc discs to sand away the worst of the tool marks then use regular 2-3" regular pads then switch to soft pads. Go to the desired level of sanding.

Part off the bottom to about 1/4" (slightly concave) then saw. Finish with Dremel tool then sand.

This was a great demonstration! See more of Craig's work at:

www.armadillowoodworks.com.

President's Corner

President's Corner
by
Tom Cour

Craig Timmerman of Austin, Texas, presented the workshop at our September meeting. I really enjoyed the all day presentation of the "Winged" Bowl and the Multi Axis vase. I was in the Sunday hands-on work shop where I attempted to make the multi-axis vase. While I didn't complete the project, I think I progressed enough to finish it in my own shop, if I can somehow find the time.

The State Fair began on September 9. Bill Mantelli and all of his volunteers did a great job getting everything ready for the opening. Once again our entries were down, from ~95 in 2010 to 77 this year. Our numbers may have been down but quality certainly was not. We had several youth entries this year. The quality of the entries in all classes was very high.

The December meeting will once again be in two parts: 1) a gift exchange using the same format as in years past and 2) a planning session for 2012. The gift exchange is fun, but only if everybody participates. So bring tools, wood, books, turned items or something related to turning to the meeting. DO NOT WRAP YOUR GIFT.

The planning session is vital to the club's future operation. I know some of you think it is boring but we try to plan the next year's program around what you tell us at the planning session. Support of the professional turner demonstrations has been falling so we need your input on what we should change. If you don't communicate, we can't plan well.

New Members

NMWT Recognizes Roe Barnes, Diosdado Rivera , and Ken Williams as our newest members

State Fair

2011 NM State Fair Recap

Thanks to the effort of thirty-six volunteers, our exhibit at the New Mexico State Fair this year was very successful. We judged seventy-seven entries, awarded sixty-two ribbons, turned and gave away hundreds of items, and showed thousands of State Fair visitors what the New Mexico Woodturners are all about.

Thanks to everyone who participated.

Photos of all the fair entries will soon be posted on our web site. Go to:

www.nmwoodturners.org to check them out.

Bill Mantelli State Fair Coordinator

CLASSES

Santa Fe Community College
www.sfccnm.edu

Santa Fe Community College offers both credit and noncredit courses taught by some of the most prominent artisans in the woodworking field. Classes are offered in the Fall, Spring, and Summer sessions. For more information on SFCC classes, contact club member Al Mirman, one of the Woodturning instructors, at 771-0490. Information can also be found at SFCC's web site.

Discounts & Rebates

Woodworker's Supply
Meeting Day Sale
www.woodworker.com

Specials will be pages 82-83 from Catalog #252 - Woodturning tools and Accessories

Crafts Supply

www.woodturnerscatalog.com

Offers a discount to members on large orders. Craft Supply has implemented a new club support program. Visit their web site or phone Kathy Lawrence at 1-800-551-8876

Albuquerque Hardwood Lumber Co

NMWT members receive Wholesale Prices. ABQ Lumber has hardwoods, Lampine Thermofused Melamine, plywood, veneers, and furniture grade white pine.

Oneway Manufacturing

www.oneway.on.ca

Any member who may want to receive sales email direct from Oneway, please provide Alan Becker with your name and email address.

Check their web site oneway.on.ca for products.

- 20% discount on most products plus shipping!!!!
- 25% discount on most products and free shipping on individual orders over \$850.00.

Combine your club orders and take advantage of this sale!!!! Sale does not include lathes!!!!

Contact for more information:
 Alan Becker 505-467-8382
alan-becker@comcast.net

CAS-ONEWAY CHUCK PACKAGE DEALS!!!! Good Through October

#2985 TALON CHUCK COMPLETE WITH SPINDLE ADAPTOR	\$231.95
#3016 SPIGOT JAWS	40.95
#3015 #3 JAWS	49.95
TOTAL	\$322.85

PACKAGE DEAL INCLUDING SHIPPING \$270.00

#2137 STRONGHOLD CHUCK COMPLETE WITH SPINDLE ADAPTOR	\$286.95
# 2104 SPIGOT JAWS	48.95
#2106 #3 JAWS	54.95
TOTAL	\$390.85

PACKAGE DEAL INCLUDING SHIPPING \$320.00

For Sale!

Remember, your items for sale will run for one month unless you request an extension.

There is no charge for listing items, and we welcome members to use this space for anything related to woodturning.

⇒ **You can also run an ad to FIND or TRADE something?**

Exotic Turning Blanks

A NEW ALBUQUERQUE SOURCE FOR EXOTIC TURNING BLANKS

Jake Jacobson and Jens Pleugmann are opening a store which will be a source of turning blanks for the Albuquerque area. They are working on a rental agreement for space in the Candelaria/Richmond area. In the meantime Jake and Jens can be reached by phone or via their website. By telephone:

Jake Jacobson (505) 417-2361
 Jens Pleugmann (575) 517-9961

Their website address is:
www.abqexoticwoods.com

Silent Auction

The Club is now offering a Silent auction. on meeting days. Bring your unwanted items, tools, wood, etc. The items will be placed on a

table and bids will be awarded at break time.
All items are to be paid for at the time.

Instant Photo Gallery

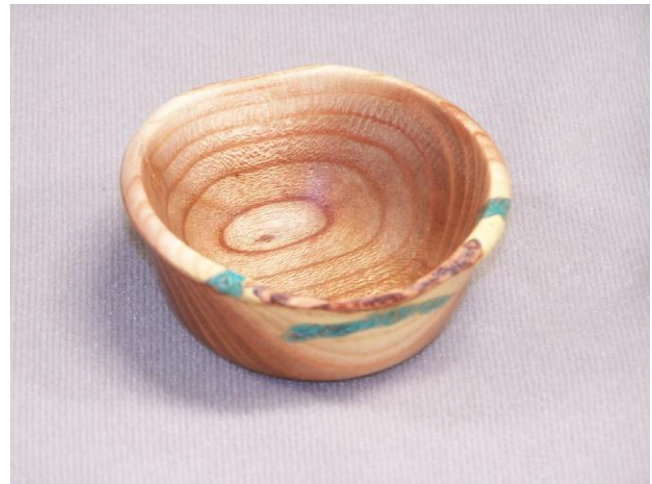
Pat Beatty- Catalpa Bowl



Pat Beatty – Cherry Lidded Box



Pat Beatty – Salt Cedar Bowl



Ralph Watts- Bloodwood, Ash Box



**Irling Smith – Oak, Walnut, Maple,
Bloodwood, Mahogoney, Satin wood**



Mentors

Members are always welcome to contact the people on the following list for guidance to better turning ideas, and techniques -- Free to members so give a Mentor a call!

Name	Phone	Description
Bill Zerby	891-9188	Basic spindle turning & tool sharpening
Bob Clancy	281-4469	Basic turning & bowl turning
Dan Shipman	296-9754	Basic turning, hollowing & segmented construction
Irling Smith	865-9230	Segmented turning & design
John Ellis	771-1773	Basic turning, plates, tools & handles
Red Hollenbach	823-2260	Basic turning & small items
Ed Hume	291-9792	Preparation, inlay & polishing Turquoise
Ron Phillips	867-0612	Specialty tools, rests & steadies
Ralph Watts	792-4860	Advanced turning, carving, coloring, and finishing
Janet Smith	823-2439	Pen turning & finishing

Library Corner

A good selection of educational DVD's are available for check out during club meetings

Denim Shirts

Prices for NMWT's Shirts and Hats

- Long Sleeve Denim Shirt \$27.00 including embroidery
- Short Sleeve Denim Shirt \$25.00
- Polo (golf) shirt \$22.00
- Short Sleeve T-Shirt \$15.00
- Caps (baseball) \$11.00
- Names Embroidered on Shirt \$3.00
- Logo on Customer's Garment \$9.00
- Add \$2 for XXL and \$3 for XXXL

Contact: Tom Cour 867-8771

Lathes

NMWT owns several lathes, which may be checked out. New members who have yet to purchase their own lathe are encouraged to take advantage of this club benefit. If you meet or hear of someone who might benefit from this resource, please pass their name on to John Ellis.

Web Sites

NMWT

www.nmwoodturners.org

Please visit our web site. Webmaster Dave Stein continues to make many additions and improvements that are very useful to club members and the public. If you have not been there lately we now have a slide show on the Home Page and the Gallery is divided into sections with slide shows.

Found a good WEB site? Want to share it with other club members? Then send the info to our web site at: www.nmwoodturners.org

Questions or suggestions are welcome. Please contact the club Webmaster Dave Stein at: dave@seriouslight.com

Suggested Web Sites

www.cleanturn.net
www.pennstateind.com
www.tufftooth.com
www.woodmagazine.com,
www.penturners.org
www.woodturnerscatalog.com
www.WoodTurningz.com
www.woodturningvideosplus.com
www.woodweb.com
www.sofasandsectionals.com/wood-turning-resources
www.woodworkersjournal.com

For those of you who have equipment or material for sale, you can have it posted here in our newsletter, but another resource is: www.albuquerque.craigslist.org

**New Mexico WoodTurners
c/o Bobby Dickson
11620 Wild Horse Trl SE
Albuquerque, NM 87123**

